
Proposed common frequency zone – Oamaru airspace user consultation

Table of Contents

Introduction	1
Proposed airspace.....	1
Possible effect on local operations	3
Further comment	3
Consultation list	3
Submissions.....	5
Further information.....	5

Introduction

A Common Frequency Zone (CFZ) is non-mandatory area and advisory in nature, i.e. these areas are not designated under Part 71, used in New Zealand only and described in AIPNZ ENR 5.3, Section 5.

CFZs are established to encourage pilots to use a single VHF frequency allocated for the zone. Pilots should transmit position, altitude and intentions relevant to prominent reporting points or features at entry, and at other times for traffic safety.

This request has been made to CAA to facilitate local and itinerant traffic operating within uncontrolled airspace. The reason stated in support of the application is:

To establish a permanent CFZ around Oamaru Airport to clarify the boundaries where aircraft should be on the Oamaru Airport discrete frequency 120.55 Mhz while retaining the benefits of the discrete frequency, mainly being the containment of Oamaru Airport's high level of radio traffic.

Proposed areas

This application has been received for the establishment of a CFZ in the area around Oamaru aerodrome (NZOU). This is depicted in Figure 1 below.

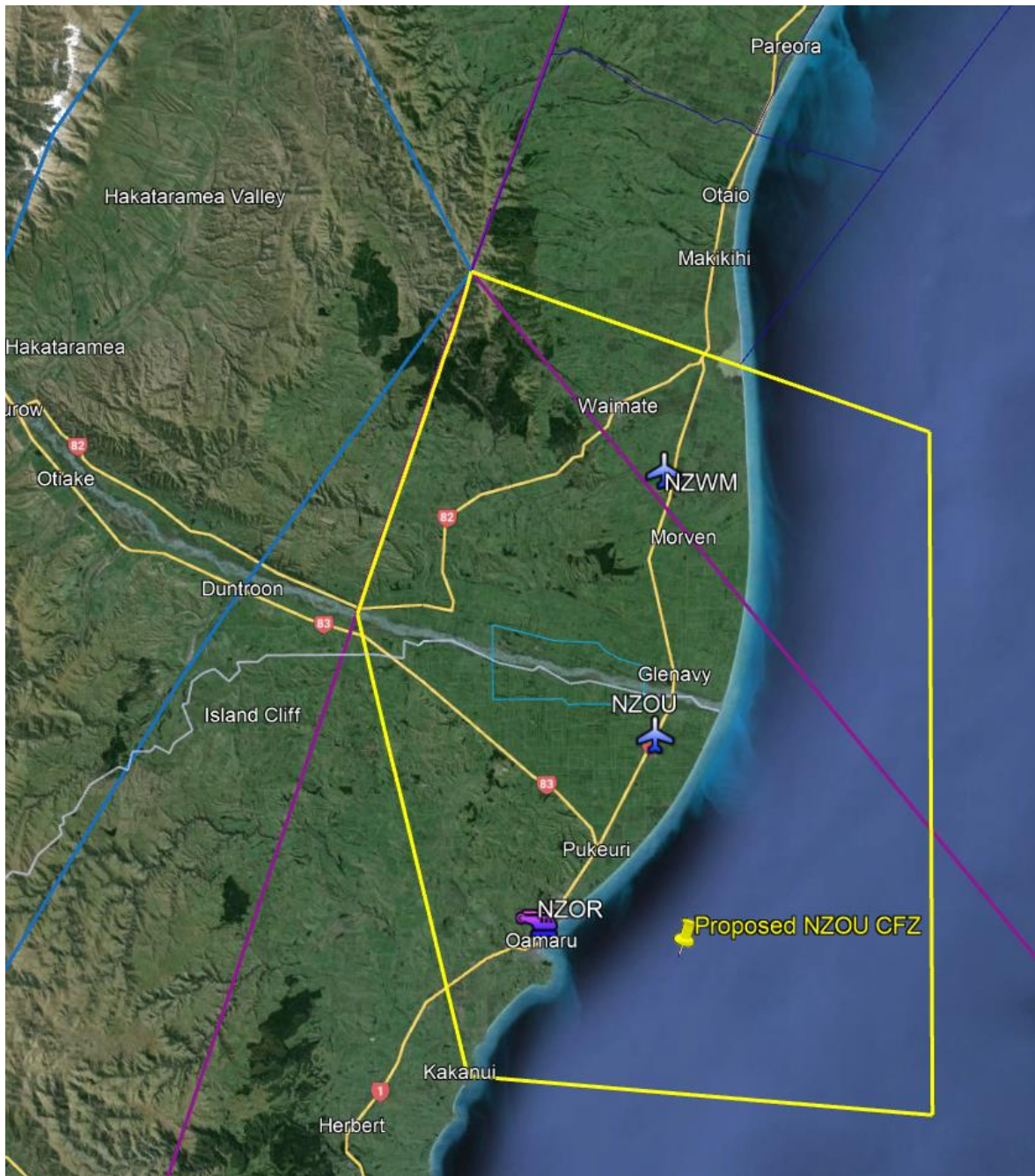


Figure 1 – Proposed Oamaru CFZ

An upper limit of 9500 ft for the CFZ has been proposed which is the lower limit of controlled airspace in the area.

The northern boundary of the proposed Oamaru CFZ is aligned with the Timaru South MBZ and South Canterbury CFZ.

Possible effect on local operations

The proponent has requested the recently published Oamaru aerodrome frequency (120.55 MHz) is also published as the common frequency for this proposed CFZ area.

The proponent commented that the CFZ area would facilitate:

- Operators to Waimate aerodrome (NZWM) , Oamaru aerodrome (NZOU) and Oamaru Hospital Heliport(NZOR) to be operating on the same frequency.
- Facilitate NZWM and NZOU being on the same frequency, necessitating less frequency changes transiting up the coast and no frequency change for the short transit between NZOU and NZWM; the same benefits applicable for transits between NZOU and NZOR.
- Allow aircraft to transit clear to the southwest of these aerodromes, through the Kakanui and Waitaki valleys without being on the Oamaru frequency if they don't wish to do so.

Further comments

As stated, CFZ are advisory in nature and therefore pilots do not have to operate on a particular frequency.

Consultation list

The Director invites feedback regarding the proposed airspace change.

This document will be sent directly to the organisations listed below. It would be appreciated if you would kindly forward the document to your members for consideration and comment.

Aerodrome operators (charted aerodromes only):

- Ashburton aerodrome
- Christchurch aerodrome
- Fernside fields aerodrome
- Forest Field aerodrome
- Loburn Abbey aerodrome
- Oamaru aerodrome
- Oamaru Hospital Heliport
- Pudding Hill aerodrome
- Rangitata Island aerodrome
- Rangiora aerodrome

- Springfield aerodrome
- Timaru aerodrome
- Waimate aerodrome
- West Melton aerodrome
- Wyndale aerodrome

Operators, Organisations and User Groups

- Aircraft Owners and Pilots Association
- Airways Corporation of New Zealand
- Air New Zealand
- Balloon Aviation Association
- Canterbury airspace user group
- Canterbury aeroclub
- Flying New Zealand
- Gliding New Zealand
- Mid Canterbury aeroclub
- Model Flying New Zealand
- New Zealand Airline Academy (Oamaru)
- New Zealand Aviation Federation
- New Zealand Agricultural Aviation Association
- New Zealand Helicopter Association
- New Zealand Hang Gliding and Paragliding Association
- North Otago aeroclub
- Recreational Aircraft Association of New Zealand
- Royal New Zealand Air Force
- Skydiving Kiwis
- South Canterbury aeroclub
- Sport Aircraft Association New Zealand

- Sport Aviation Corp

Electronic notification of the consultation will be sent to subscribers to the CAA email Notification Service for Airspace Notifications Areas NZ8 and NZ9.

This document is also available on the CAA website at the following link:

[2024 airspace reviews | aviation.govt.nz](https://www.aviation.govt.nz/2024-airspace-reviews)

Submissions

This document forms part of the consultation process. Submissions are sought from any interested person, organisation, or representative group.

Submissions are accepted either electronically or via mail, addressed to:

Team Coordinator
Aviation Security and Infrastructure
Civil Aviation Authority of New Zealand
PO Box 3555
Wellington 6140

Email: aeronautical.services@caa.govt.nz

Reference – 24/ASD/73 Oamaru CFZ

Closing date for submissions to this proposal is **Wednesday 24th April 2024**

Further information

For further information contact:

Sven Thelning
CFI North Otago Aero Club
TEL: 021 0278 6087

Julia Fitness
Technical Specialist – Aeronautical Services
Civil Aviation Authority of New Zealand
P O Box 3555
Wellington 6140

Email: Julia.fitness@caa.govt.nz